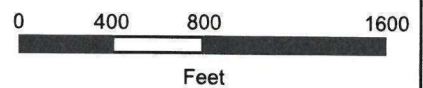




TDOT 1 **JWPSOUTH**



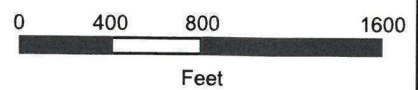
KGIS makes no representation or warranty as to the accuracy of this map and its information, nor to its fitness for use. Any user of this map product accepts the same AS IS, WITH ALL FAULTS, and assumes all responsibility for the use thereof, and further covenants and agrees to hold KGIS harmless from any and all damage, loss, or liability arising from any use of this map product.

© KGIS 2016

Printed: 9/27/2016 1:59:29 PM



TDOT 1
JWPSOUTH



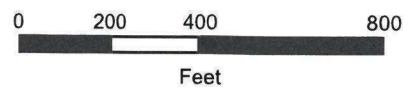
KGIS makes no representation or warranty as to the accuracy of this map and its information, nor to its fitness for use. Any user of this map product accepts the same AS IS, WITH ALL FAULTS, and assumes all responsibility for the use thereof, and further covenants and agrees to hold KGIS harmless from any and all damage, loss, or liability arising from any use of this map product.

© KGIS 2016

Printed: 9/27/2016 2:00:31 PM



TDOT 2 JWP RIVERSIDE



KGIS makes no representation or warranty as to the accuracy of this map and its information, nor to its fitness for use. Any user of this map product accepts the same AS IS, WITH ALL FAULTS, and assumes all responsibility for the use thereof, and further covenants and agrees to hold KGIS harmless from any and all damage, loss, or liability arising from any use of this map product.

© KGIS 2016

Printed: 9/27/2016 1:50:40 PM



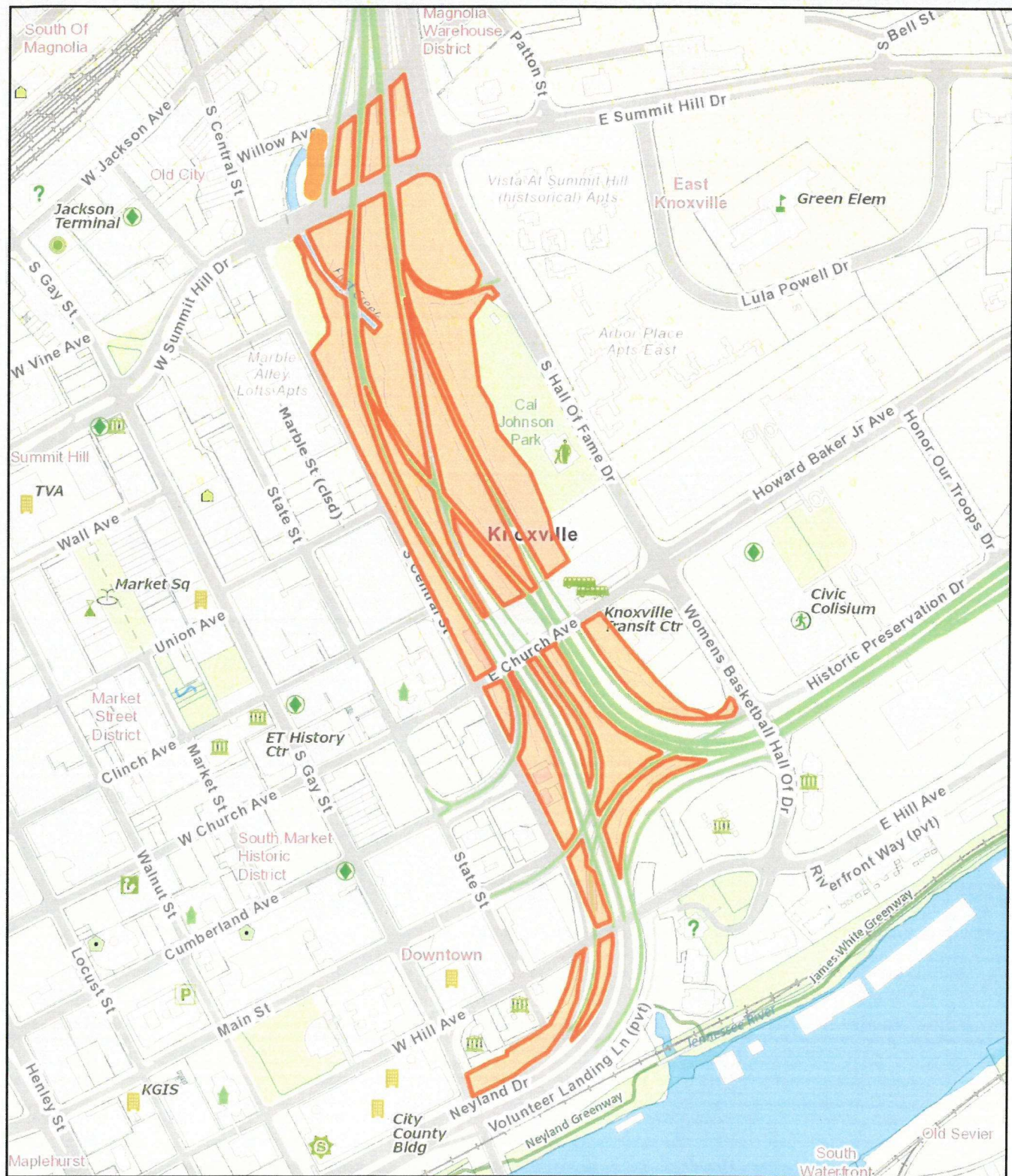
TDOT 2
JWP RIVERSIDE

0 200 400 800
Feet

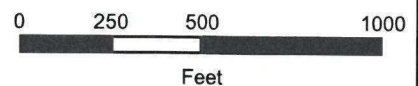
KGIS makes no representation or warranty as to the accuracy of this map and its information, nor to its fitness for use. Any user of this map product accepts the same AS IS, WITH ALL FAULTS, and assumes all responsibility for the use thereof, and further covenants and agrees to hold KGIS harmless from any and all damage, loss, or liability arising from any use of this map product.

© KGIS 2016

Printed: 9/27/2016 1:52:23 PM



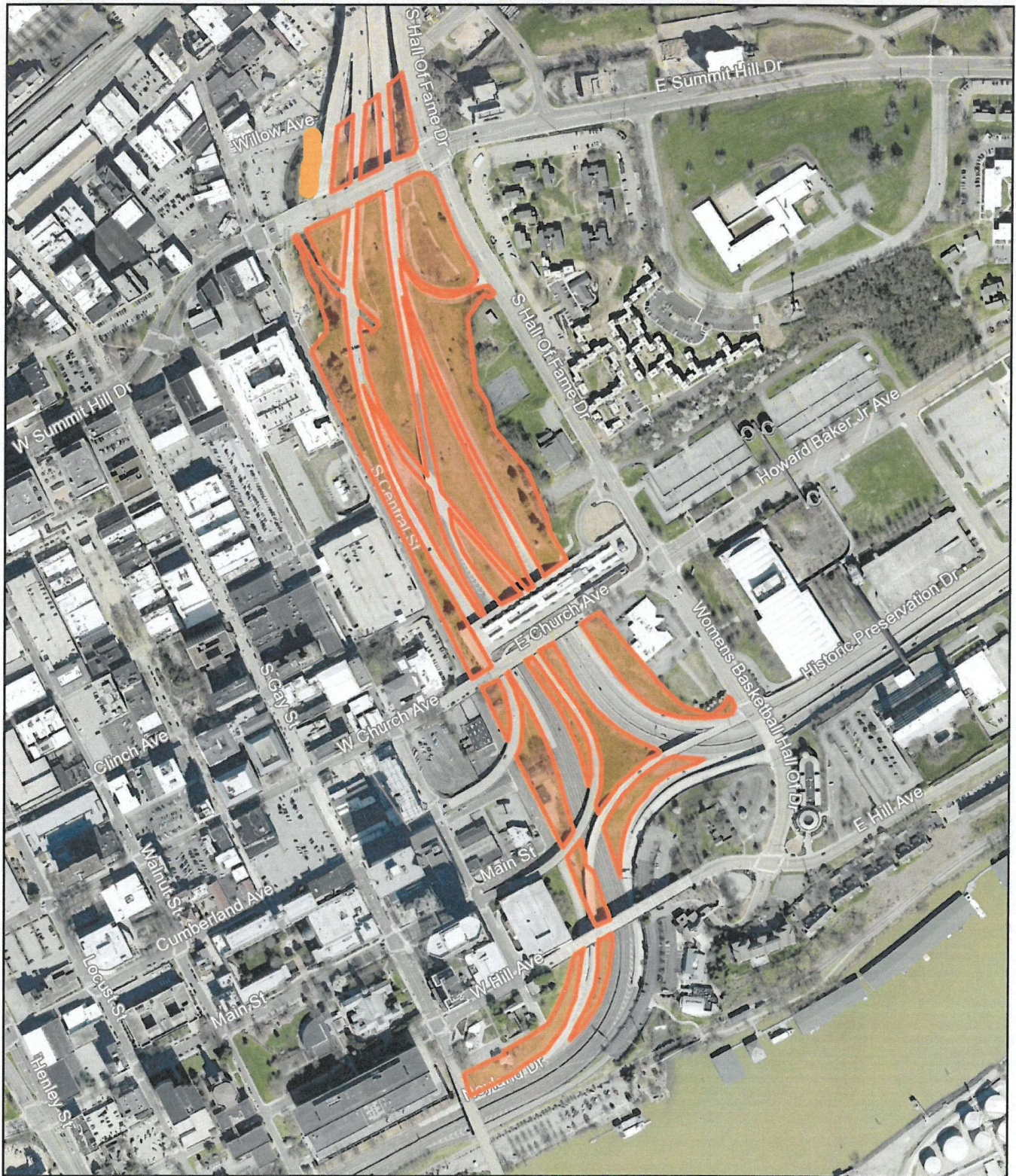
TDOT 3
JWP Downtown
 101



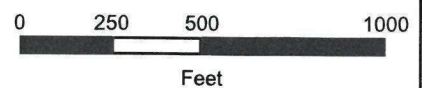
KGIS makes no representation or warranty as to the accuracy of this map and its information, nor to its fitness for use. Any user of this map product accepts the same AS IS, WITH ALL FAULTS, and assumes all responsibility for the use thereof, and further covenants and agrees to hold KGIS harmless from any and all damage, loss, or liability arising from any use of this map product.

© KGIS 2018

Printed: 9/28/2018 11:04:07 AM



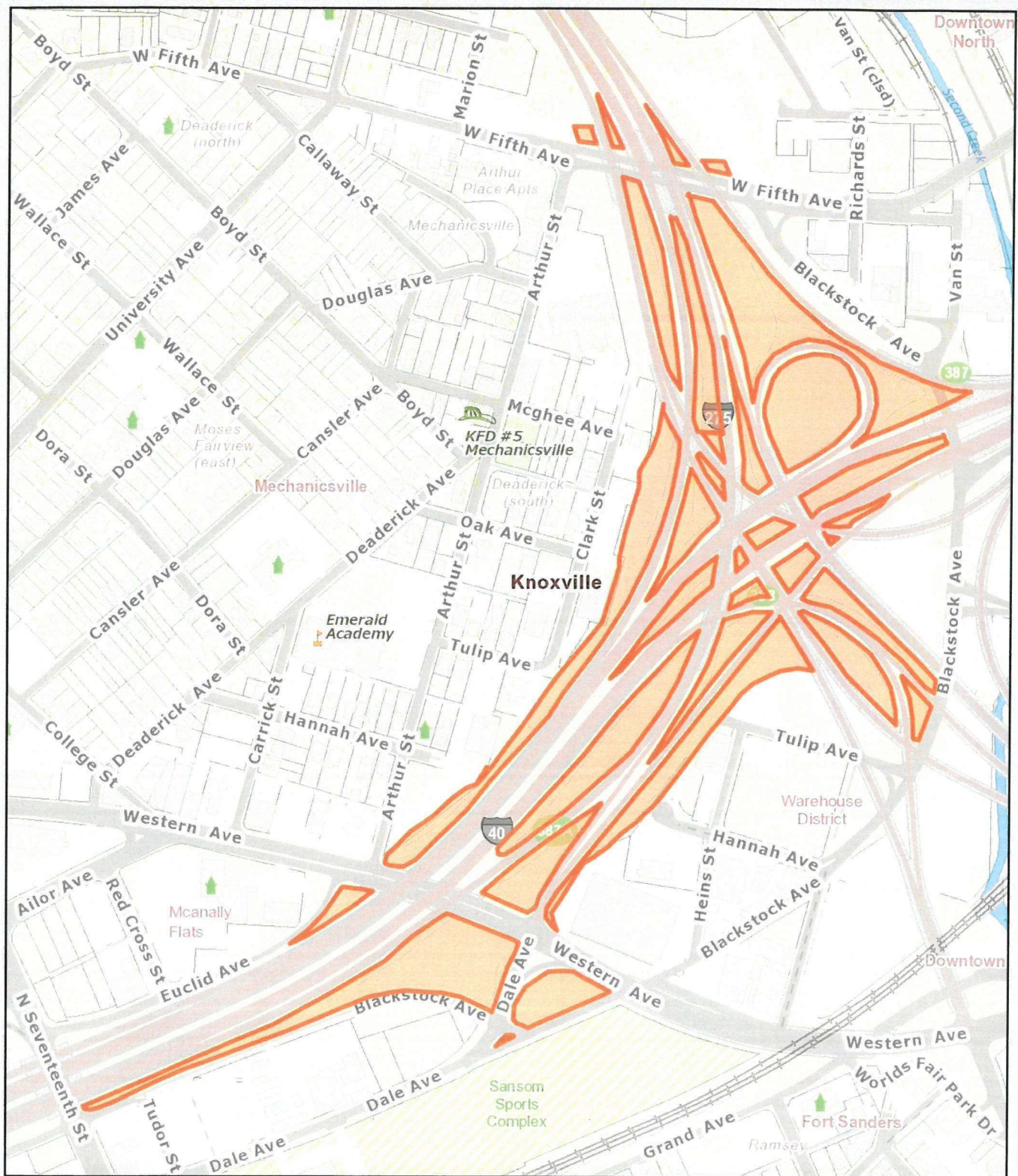
TDOT 3
JWP Downtown
101



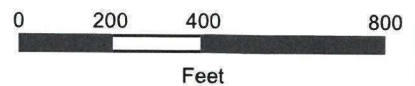
KGIS makes no representation or warranty as to the accuracy of this map and its information, nor to its fitness for use. Any user of this map product accepts the same AS IS, WITH ALL FAULTS, and assumes all responsibility for the use thereof, and further covenants and agrees to hold KGIS harmless from any and all damage, loss, or liability arising from any use of this map product.

© KGIS 2018

Printed: 9/28/2018 11:02:50 AM



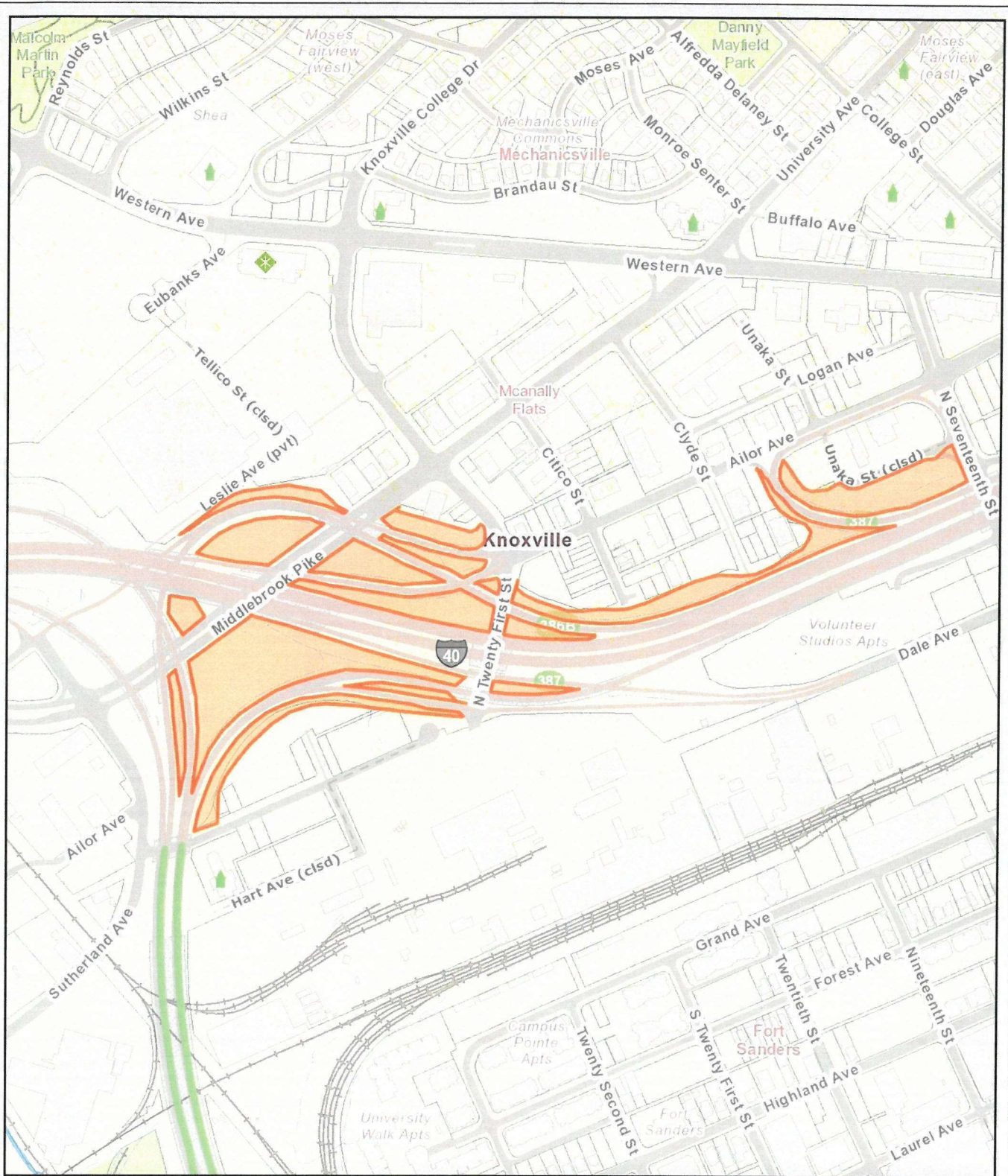
TDOT 4 East
TDOT I-40 and I-275 Interchange
N Seventeenth St - Blackstock Ave



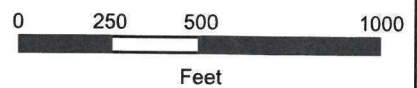
KGIS makes no representation or warranty as to the accuracy of this map and its information, nor to its fitness for use. Any user of this map product accepts the same AS IS, WITH ALL FAULTS, and assumes all responsibility for the use thereof, and further covenants and agrees to hold KGIS harmless from any and all damage, loss, or liability arising from any use of this map product.

© KGIS 2018

Printed: 10/24/2018 12:38:49 PM



TDOT 4 West
TDOT I-40 and I-275 Interchange
 from 129 - N Seventeenth St



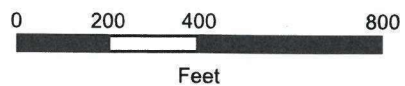
KGIS makes no representation or warranty as to the accuracy of this map and its information, nor to its fitness for use. Any user of this map product accepts the same AS IS, WITH ALL FAULTS, and assumes all responsibility for the use thereof, and further covenants and agrees to hold KGIS harmless from any and all damage, loss, or liability arising from any use of this map product.

© KGIS 2016

Printed: 10/10/2016 11:30:13 AM



TDOT 4A East
TDOT I-40 and I-275 Interchange
N Seventeenth St - Blackstock Ave



KGIS makes no representation or warranty as to the accuracy of this map and its information, nor to its fitness for use. Any user of this map product accepts the same AS IS, WITH ALL FAULTS, and assumes all responsibility for the use thereof, and further covenants and agrees to hold KGIS harmless from any and all damage, loss, or liability arising from any use of this map product.

© KGIS 2018

Printed: 10/24/2018 12:41:29 PM



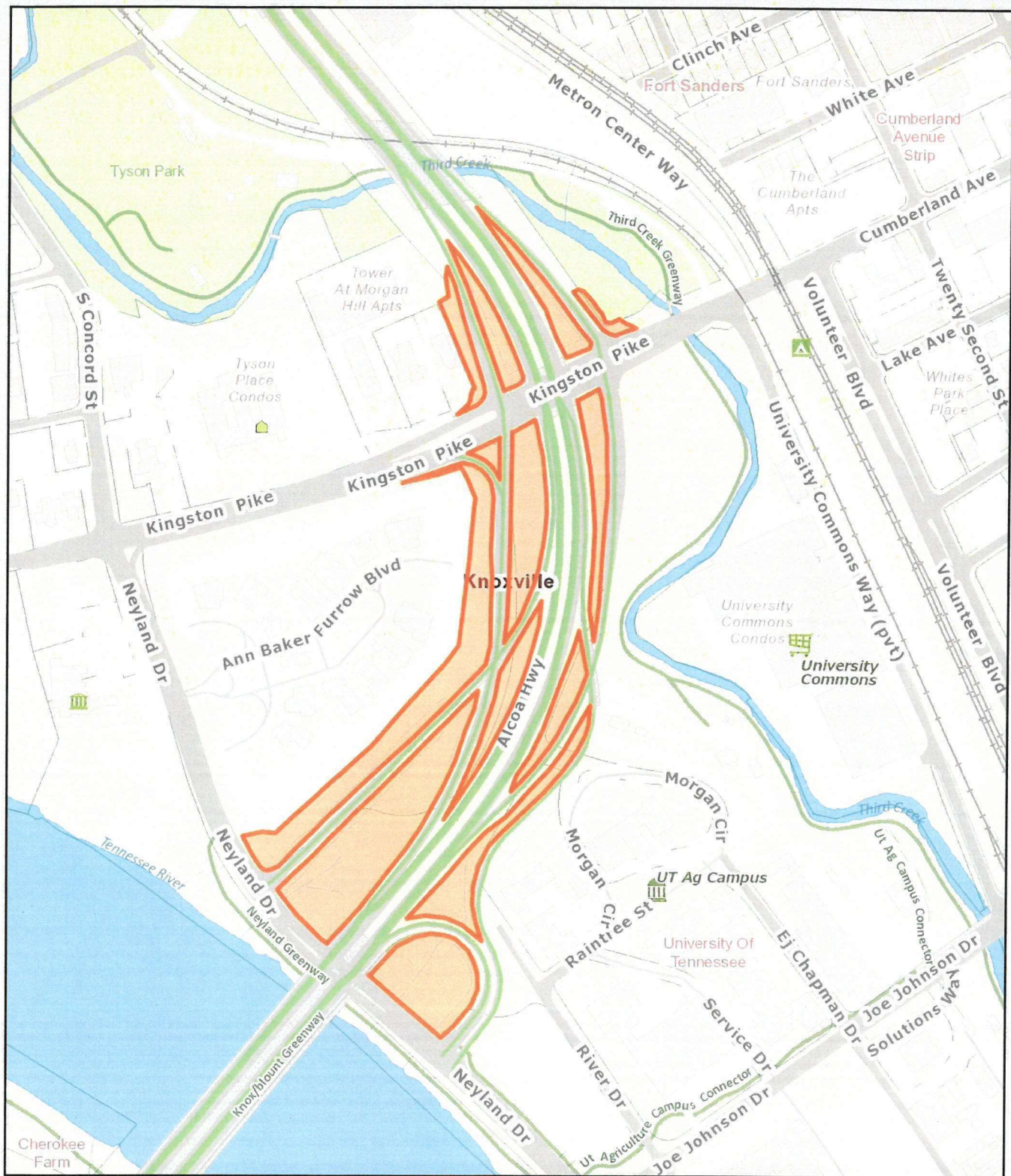
TDOT 4A West
TDOT I-40 and I-275 Interchange
from 129 - N Seventeenth St

0 250 500 1000
Feet

KGIS makes no representation or warranty as to the accuracy of this map and its information, nor to its fitness for use. Any user of this map product accepts the same AS IS, WITH ALL FAULTS, and assumes all responsibility for the use thereof, and further covenants and agrees to hold KGIS harmless from any and all damage, loss, or liability arising from any use of this map product.

© KGIS 2016

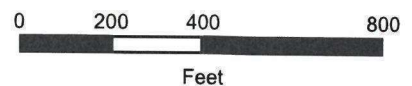
Printed: 10/10/2016 11:31:29 AM



TDOT 5

Alcoa Hwy from Neyland Dr to north of Kingston Pike

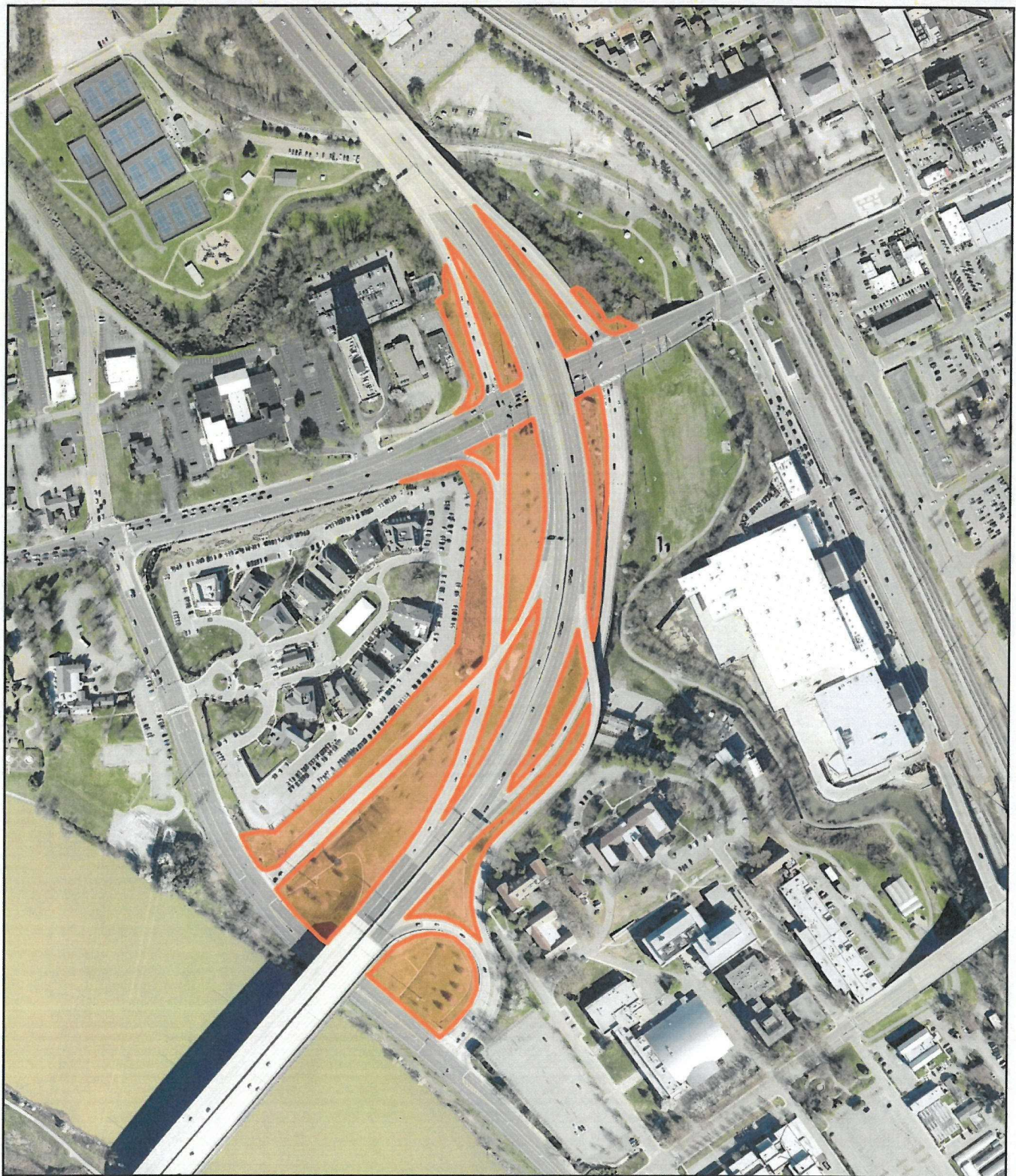
102



KGIS makes no representation or warranty as to the accuracy of this map and its information, nor to its fitness for use. Any user of this map product accepts the same AS IS, WITH ALL FAULTS, and assumes all responsibility for the use thereof, and further covenants and agrees to hold KGIS harmless from any and all damage, loss, or liability arising from any use of this map product.

© KGIS 2018

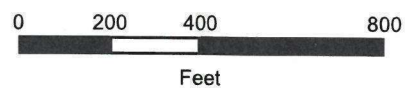
Printed: 10/25/2018 8:09:42 AM



TDOT 5A

Alcoa Hwy from Neyland Dr to north of Kingston Pike

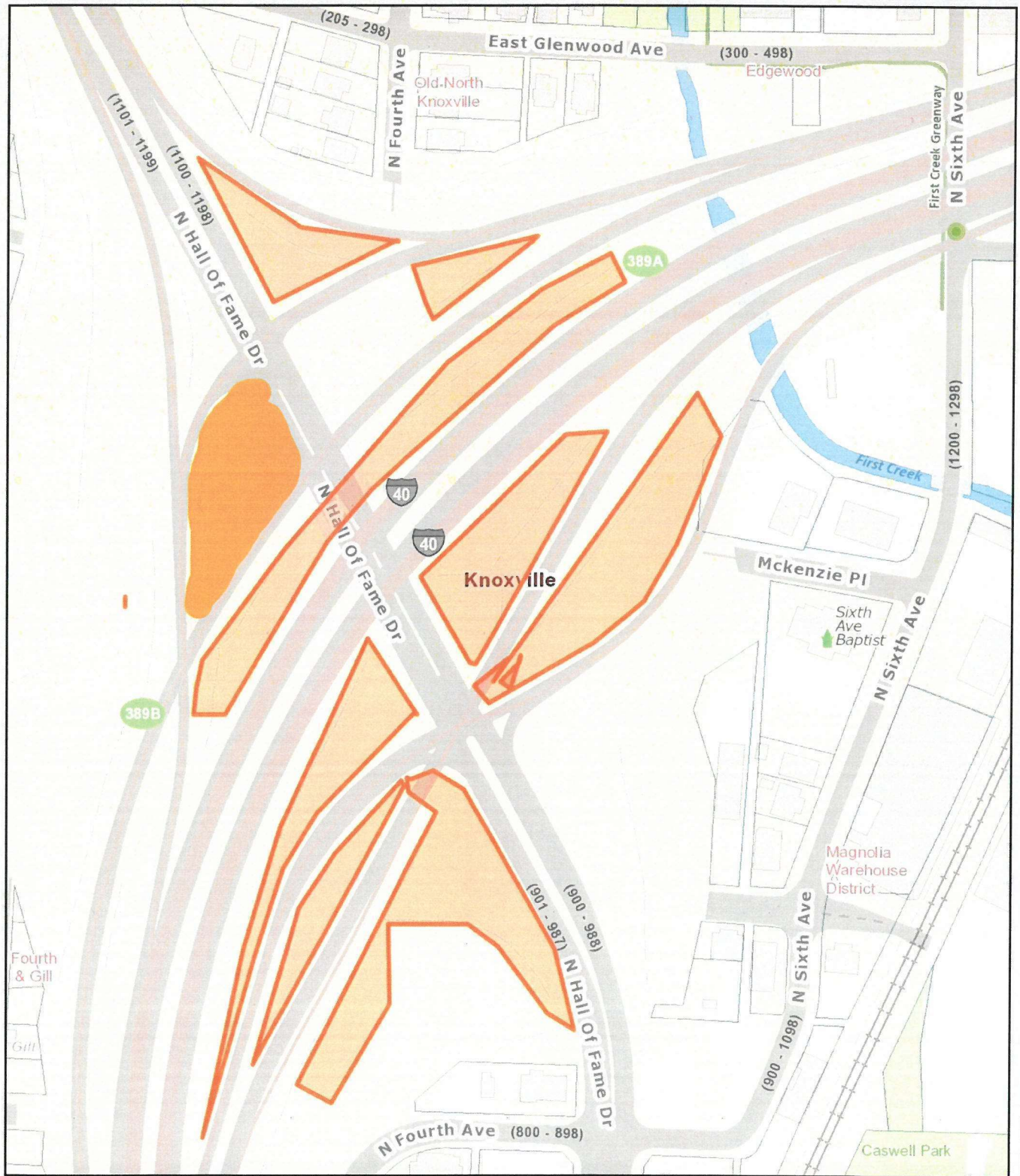
102



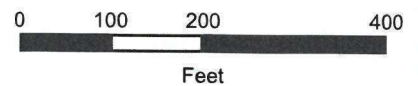
KGIS makes no representation or warranty as to the accuracy of this map and its information, nor to its fitness for use. Any user of this map product accepts the same AS IS, WITH ALL FAULTS, and assumes all responsibility for the use thereof, and further covenants and agrees to hold KGIS harmless from any and all damage, loss, or liability arising from any use of this map product.

© KGIS 2018

Printed: 10/25/2018 8:07:46 AM



TDOT 6
I-40 at Hall of Fame
 101



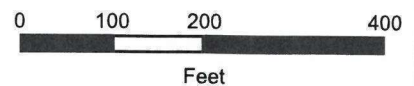
KGIS makes no representation or warranty as to the accuracy of this map and its information, nor to its fitness for use. Any user of this map product accepts the same AS IS, WITH ALL FAULTS, and assumes all responsibility for the use thereof, and further covenants and agrees to hold KGIS harmless from any and all damage, loss, or liability arising from any use of this map product.

© KGIS 2018

Printed: 9/28/2018 10:53:44 AM



TDOT 6
I-40 at Hall of Fame
101



KGIS makes no representation or warranty as to the accuracy of this map and its information, nor to its fitness for use. Any user of this map product accepts the same AS IS, WITH ALL FAULTS, and assumes all responsibility for the use thereof, and further covenants and agrees to hold KGIS harmless from any and all damage, loss, or liability arising from any use of this map product.

© KGIS 2018

Printed: 9/28/2018 10:55:11 AM